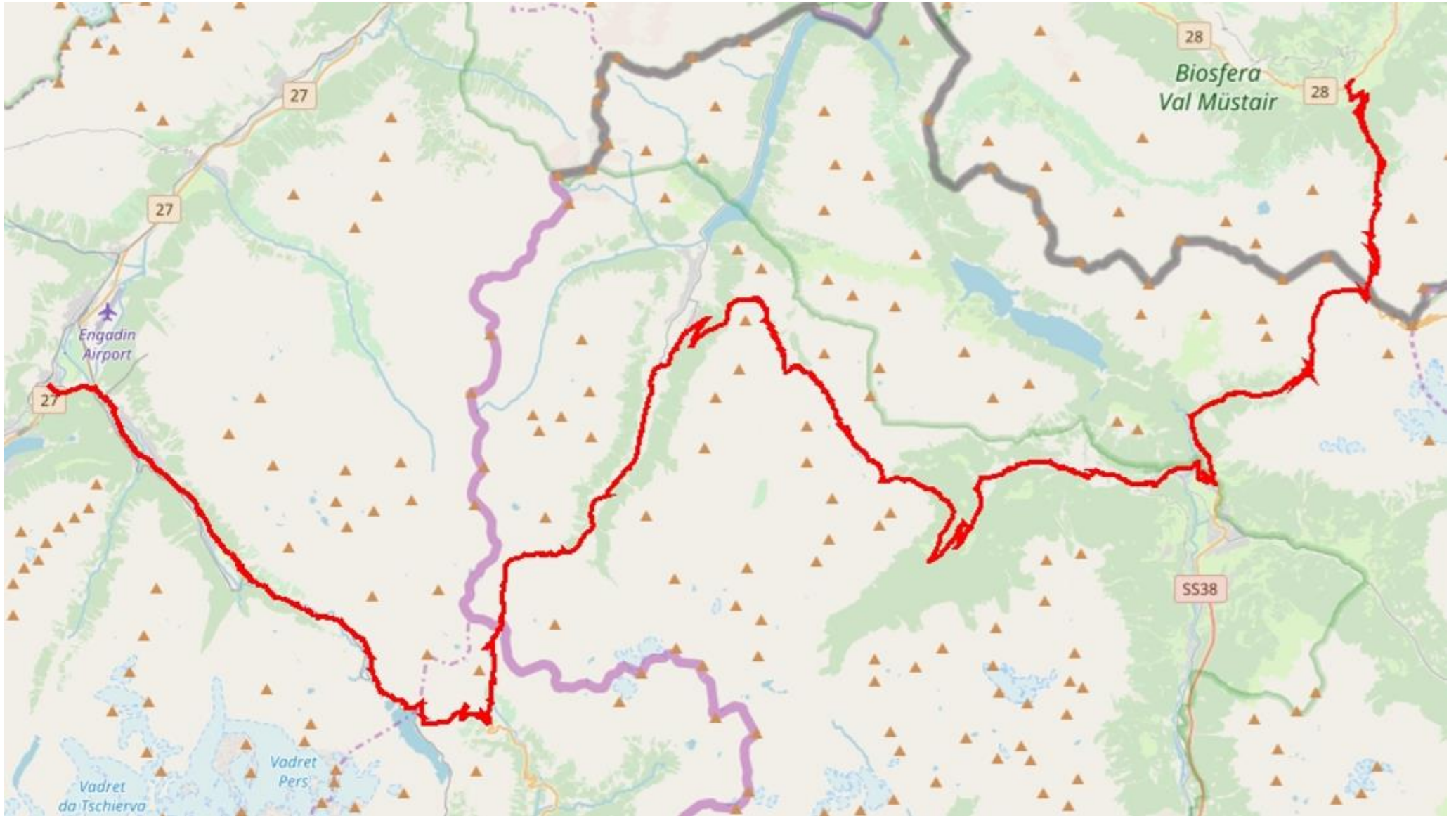
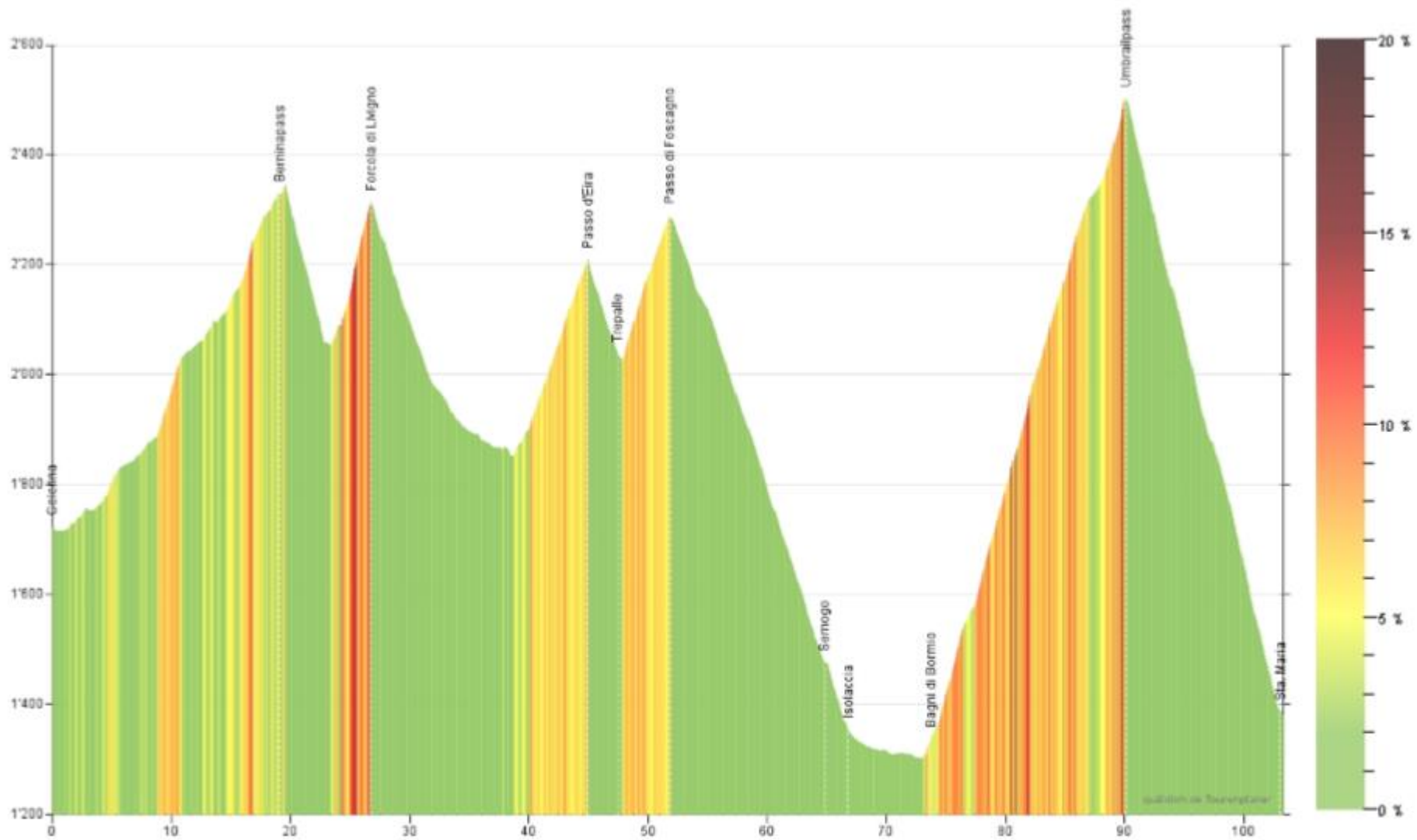


Etappe 9: Celerina - Sta. Maria

Ort	Kilometer	Höhe über Mehr	Höhenmeter kumuliert	Steigung	Zeit
Celerina	0.0	1'724	0		00:00:00
Berninapass	19,1	2'330	632	3.2 %	01:17:00
Forcola di Livigno	26,8	2'315	927	-0.2 %	01:51:52
Passo d'Eira	44.9	2'209	1'291	-0.6 %	02:50:10
Trepalle	47.4	2'039	1'291	-6.8 %	02:54:04
Passo di Foscagno	51.9	2'291	1'557	5.7 %	03:21:01
Semogo	64.8	1'475	1'560	-6.3 %	03:41:21
Isolaccia	66.8	1'355	1'560	-6.0 %	03:44:36
Bagni di Bormio	73.7	1'337	1'606	-0.3 %	04:02:21
Umbrailpass	90.1	2'503	2'778	7.1 %	06:00:03
Sta. Maria	103.3	1'380	2'778	-8.6 %	06:19:09





09 Celerina - Sta. Maria; 103.3 km; 2'778 Höhenmeter

Created by quäldich.de Tourenplaner | Offline Download unter: <http://tourcenplaner.quaeldich.de> | Online: <http://www.rennrad-tourcenplaner.de>